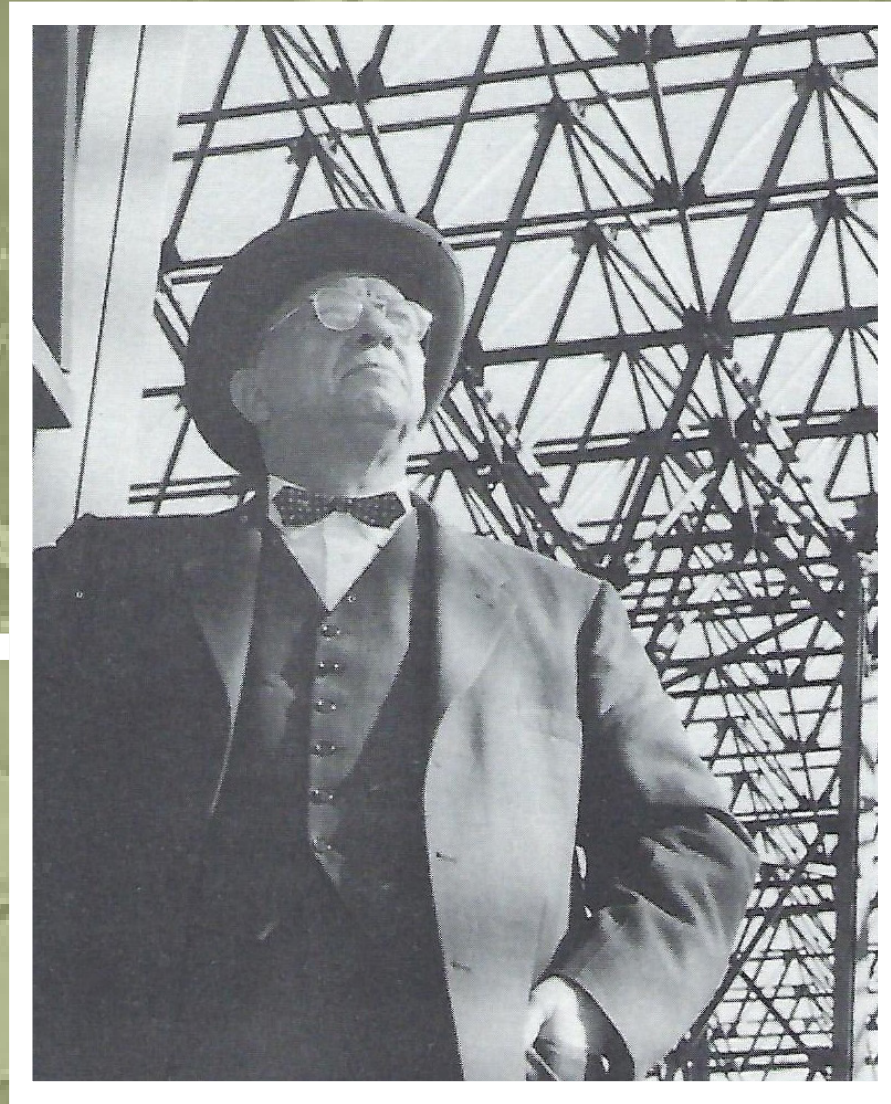


Unistrut



The founder of what would become Unistrut was Charles Attwood, a University of Michigan graduate in architecture. After working for a few firms, he decided to get chemistry and metallurgy degrees from the University of Toledo, and then he was able to begin his own company.



In 1924 Attwood formed Deceleco Inc., which manufactured electrical components here in Wayne. His company made cabinets and fasteners that held electrical equipment in large buildings. Unfortunately, progress made his process outdated, and he needed a new manufacturing idea.



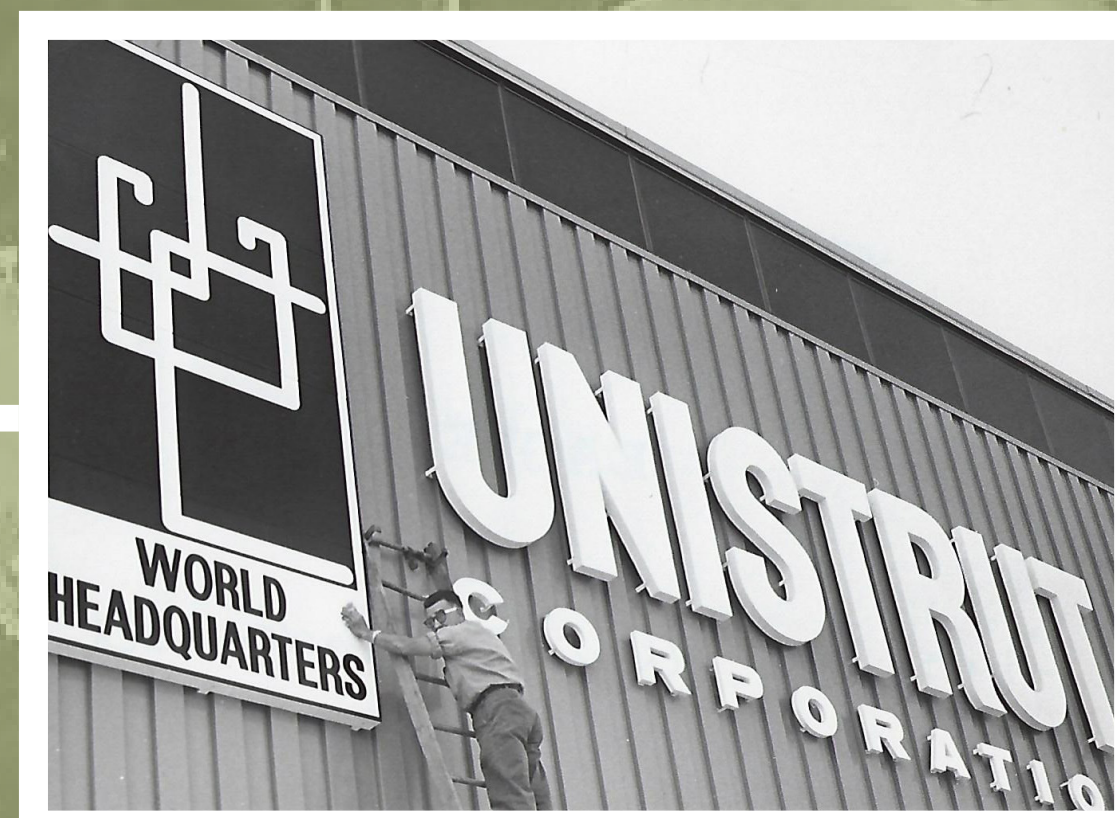
After years of testing and going heavily into debt, UNISTRUT was born in 1942. Attwood had devised a new system of building called the "Space frame" which meant steel structures could be built lighter, cheaper and faster than traditional methods. The pieces came in small sections and could easily be bolted together, like a large erector set.



The firm grew steadily, and commissions came from far and wide. Seen here is the Hoover school in Wayne.



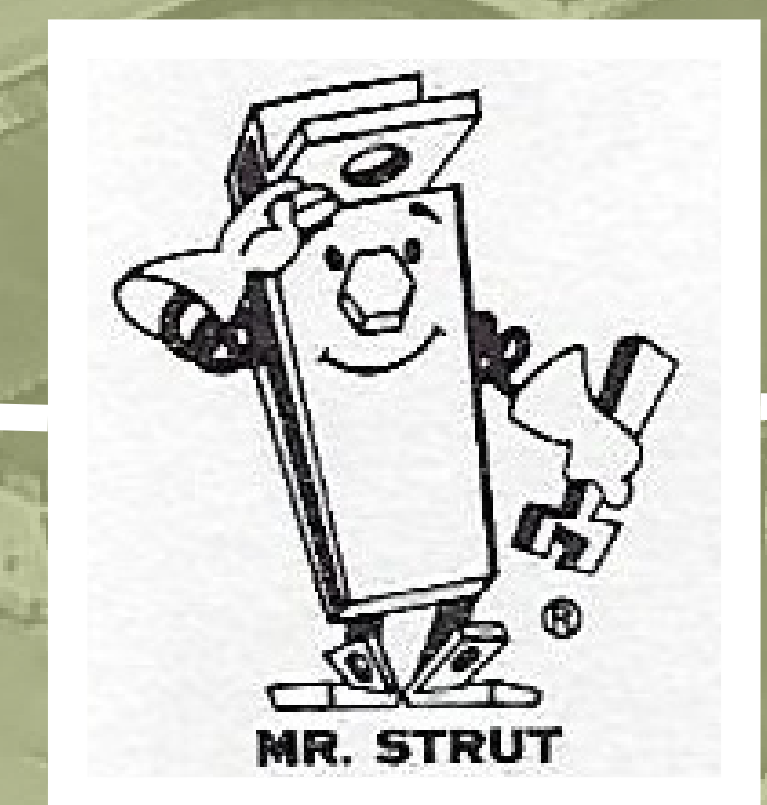
Unistrut also donated the structure at Jaycee park.



In 1971 the Wayne plant became the World headquarters for the company, which had several offices abroad. In 1973 the company was purchased by Sylvania Lighting Inc.



In 1976 new company offices were constructed downtown on Michigan Avenue West. The company would leave these offices in 1987 and moved them to Ann Arbor, while keeping the Wayne manufacturing plant.



In 1995 the company was purchased by Tyco International, and in 2010 by Atkore International. The Wayne plant is still going strong, and are still at the same site where the company began in 1924.