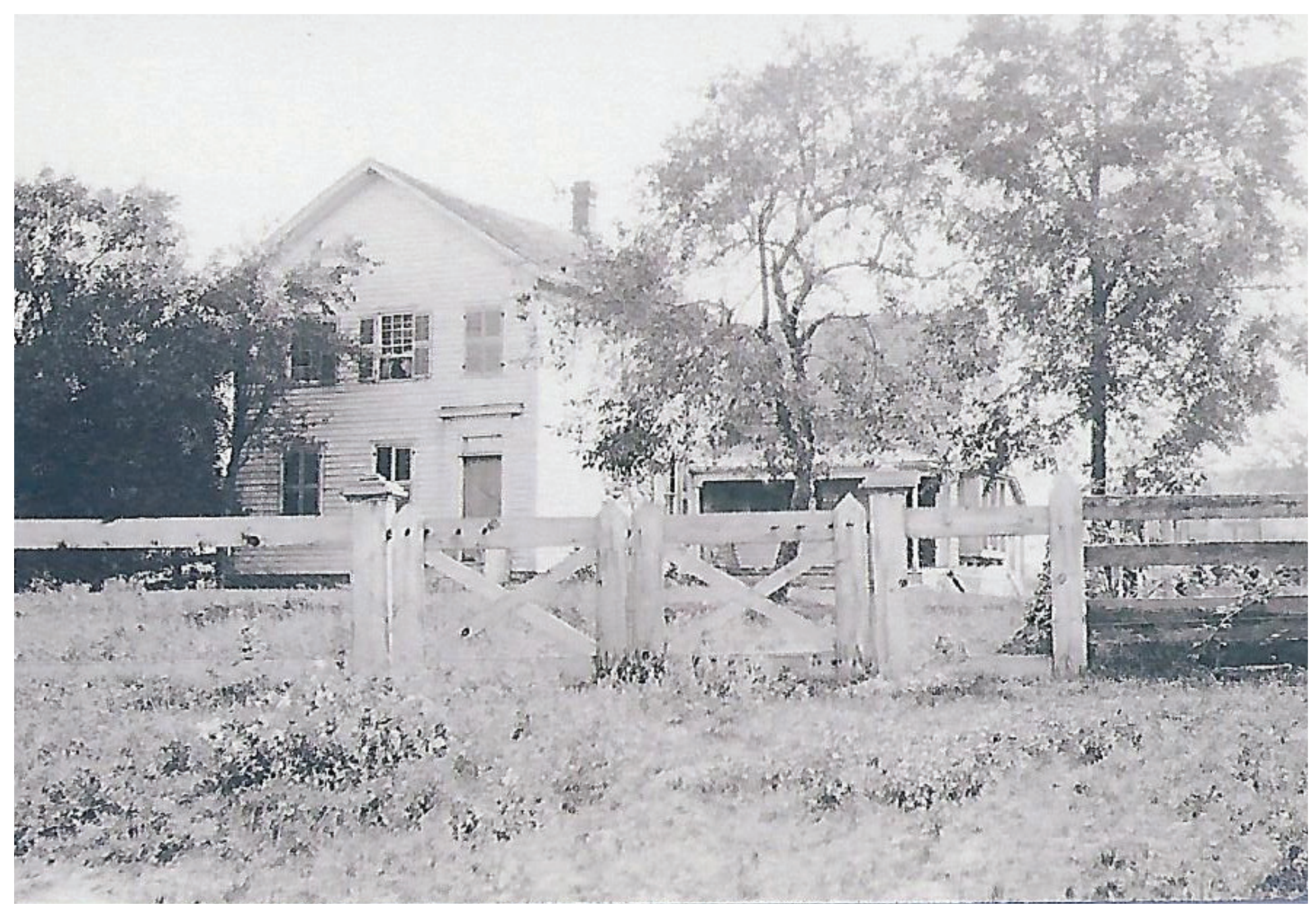


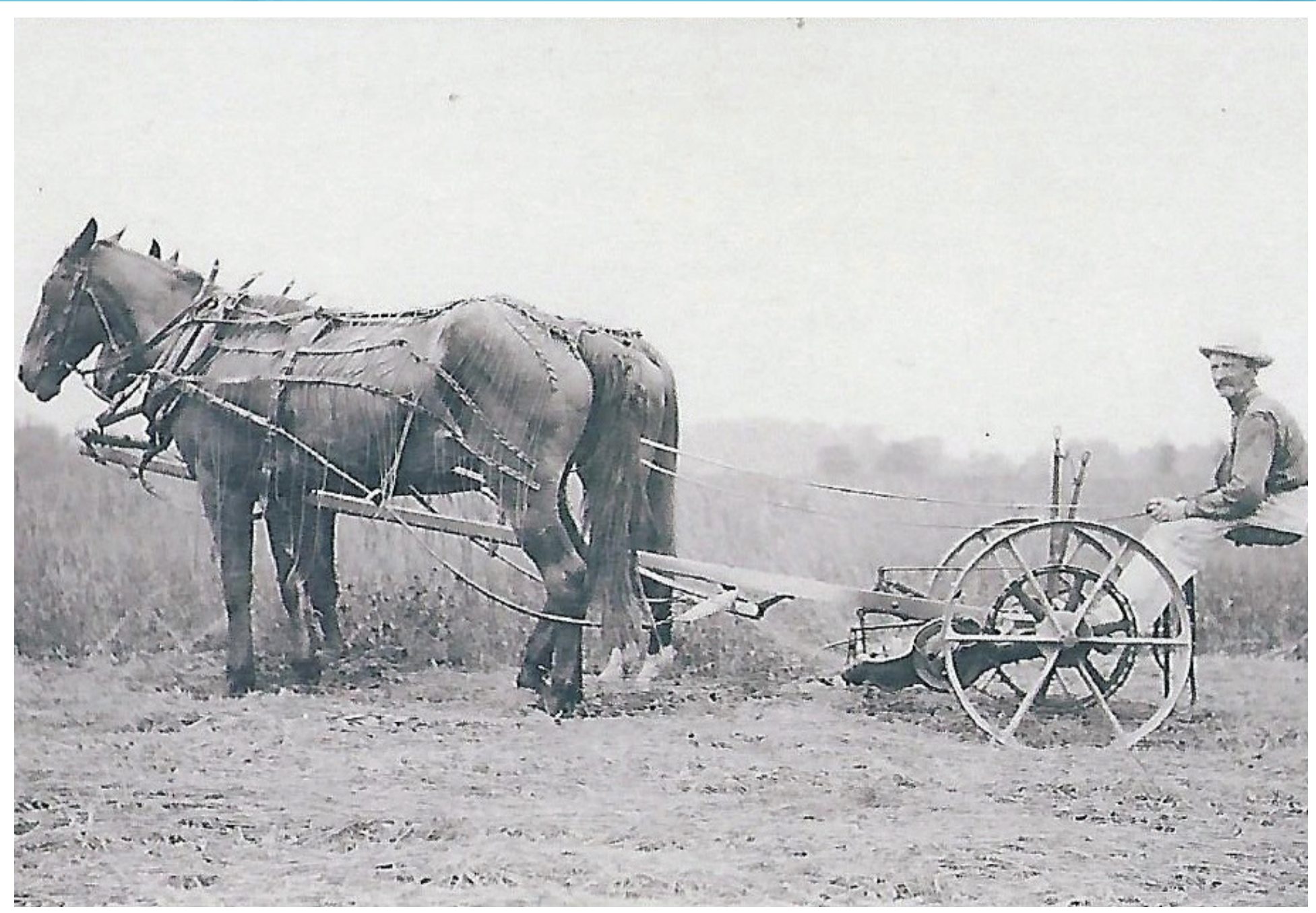
# The Stellwagen Family



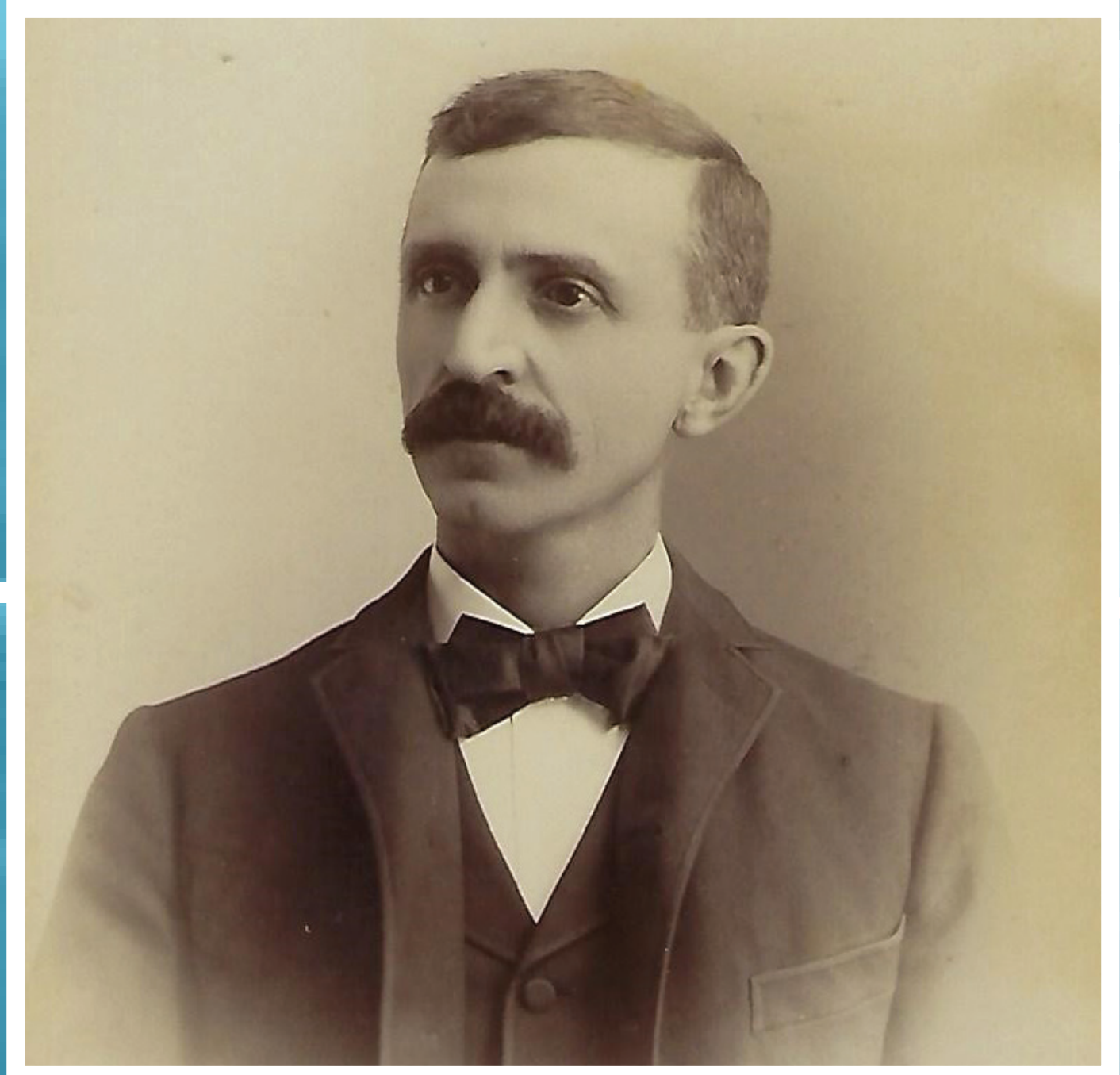
Michael and Anna Stellwagen emigrated from Germany in 1851 with their five sons. They settled on 140 acres about a half mile west of Wayne and farmed, also having three more children. Pictured here is the old Stellwagen homestead.



Oldest son George H. Stellwagen was in the Civil War, and founded Hosie & Stellwagen General store with James Hosie. The pair also owned a grain elevator, wool business, the Wayne Savings Bank and significant stock in Prouty and Glass Carriages. George had a wife, Isabelle, and four children. He was one of the wealthiest and most respected men in town when he died in 1904.



Second son John J. was a farmer and president of Prouty and Glass Carriages. Third son, Phillip Peter inherited the family homestead and farmed for the rest of his life. Philip Peter is seen in the picture above. This land would later be purchased by Ford to build the Assembly Plants in the 1950s.



John C. Stellwagen started his own general store after working for his brother George. Stellwagen and Snyder farmers store operated for over 40 years, making John C. a very successful man. He retired with his wife Ida to a mansion and farm they built in Belleville where he could raise prize winning Holstein cattle, sheep and chickens.



Almira Waltz Stellwagen, wife of Philip Peter.



Clara Louise Stellwagen as a girl. She married Clarence McCarty, who would go on to help found the Wayne Historical Society. Their daughter, Virginia Presson, would go on to be a manager at the Wayne Historical Museum.