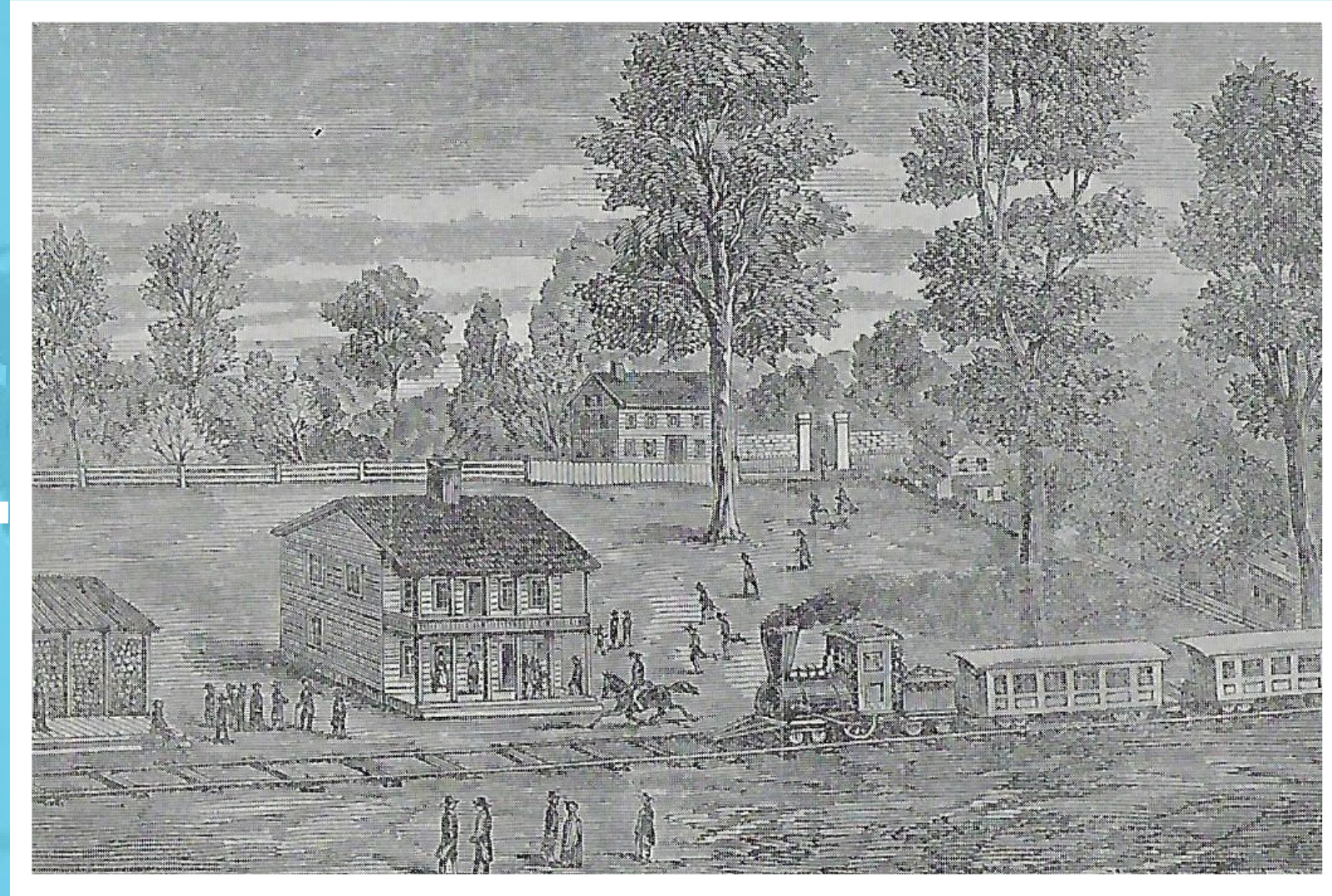


The Railroad in Wayne



In 1832 the territorial government of Michigan began to build a railroad from Detroit to Ypsilanti. The route would go through unsettled land, which was found to be very wet and boggy. The cost for construction ended up being \$3,200 per mile, a huge sum for the time. The railway finally reached Wayne in February of 1838 and it was regarded as a marvel. Wayne was just a stop on the Chicago road and only had about 12 families at the time.

Over time more and more railroads were built and connected to this line, producing a large rail network across Michigan and the entire country. In 1871 the Holly, Wayne & Monroe railroad was built west of town, heading north and south and formed a junction at Wayne. It later became the Pere Marquette railway.



Accidents did Happen...



Wayne is still a busy and important railroad intersection today

