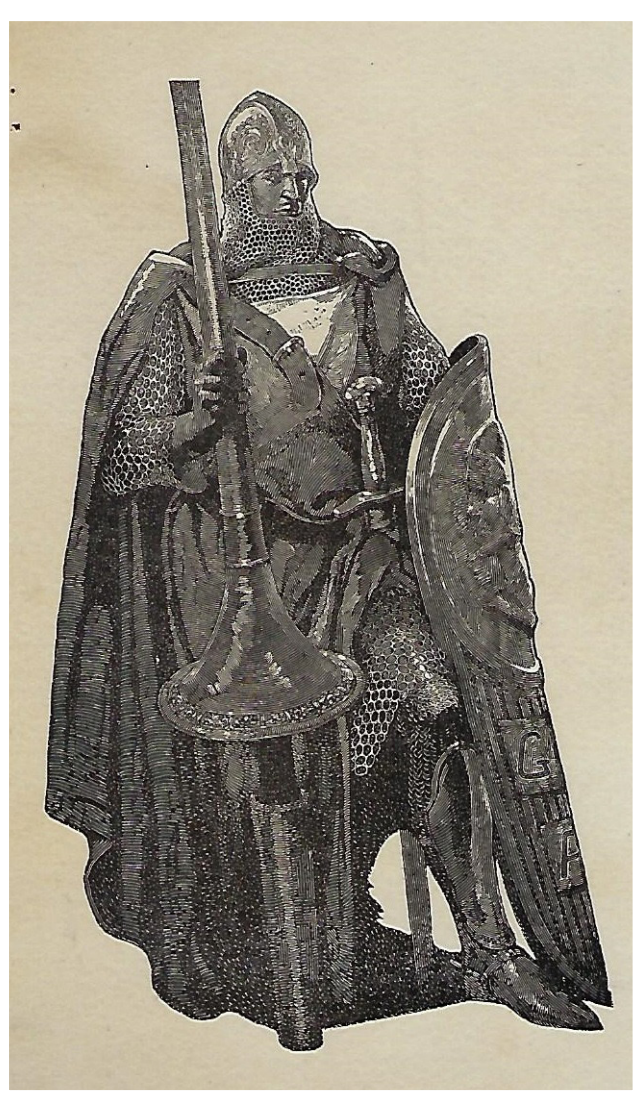


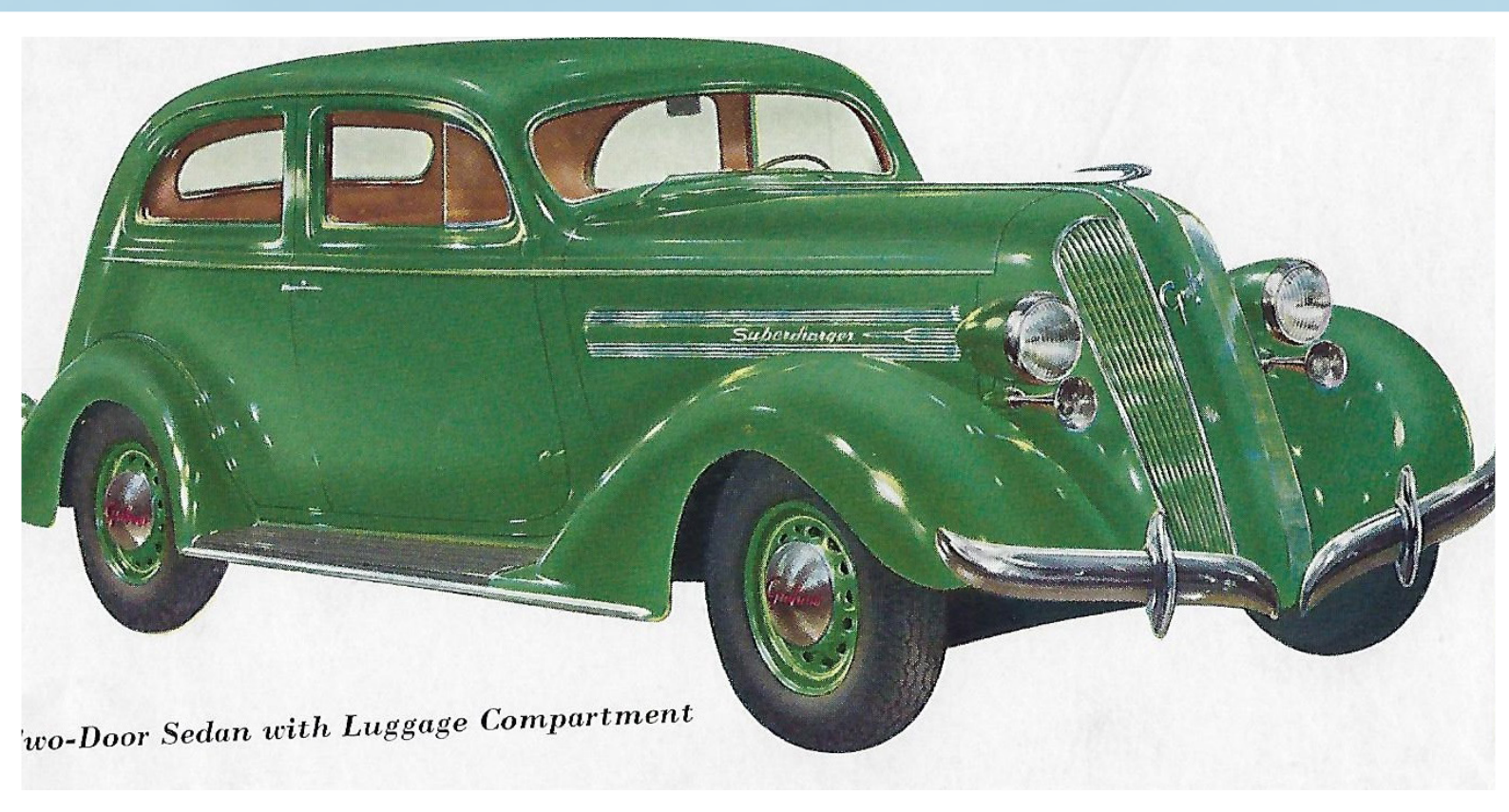
# Graham Paige



The Graham brothers, Joseph and Robert, began to make custom bodies for cars in 1919 at a small shop in Detroit. Business grew and they purchased the Paige-Detroit Motor company in 1927, becoming Graham Paige Motors. They adopted the knight as their mascot and letterhead.



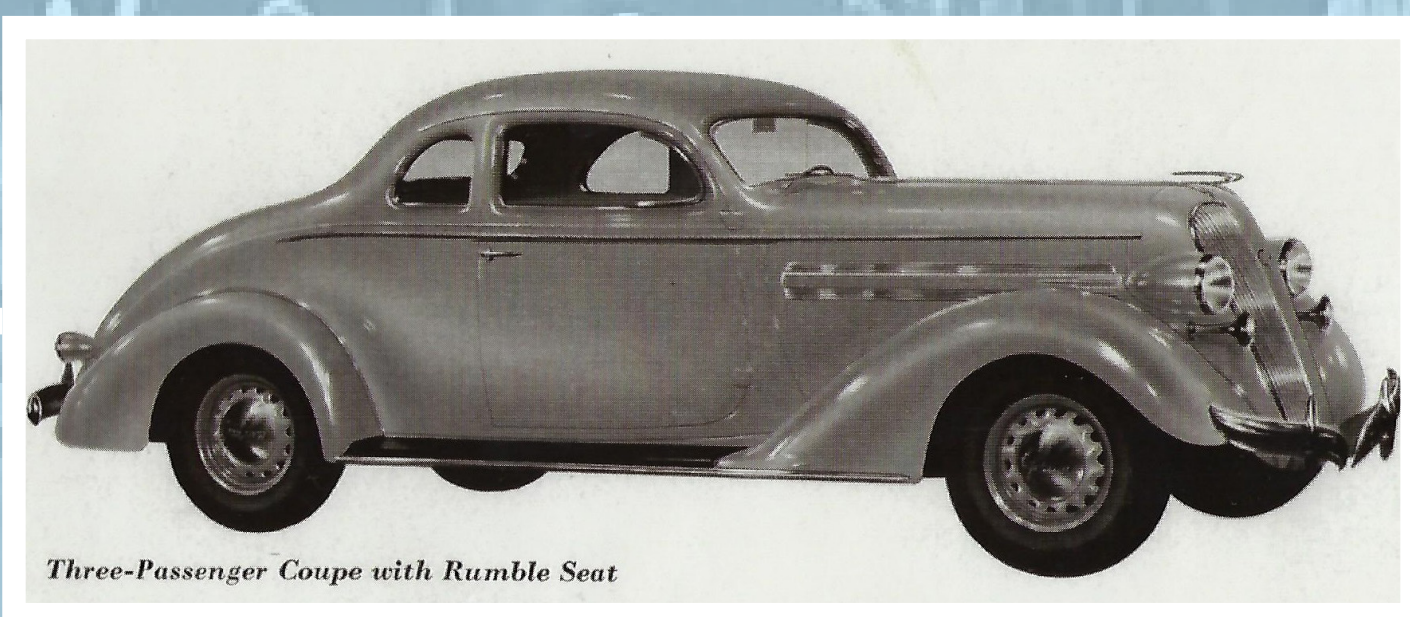
Graham Paige needed more factory space, and in 1927 bought the factory that was used by Gotfredson truck co. and Harroun in Wayne.



Two-Door Sedan with Luggage Compartment

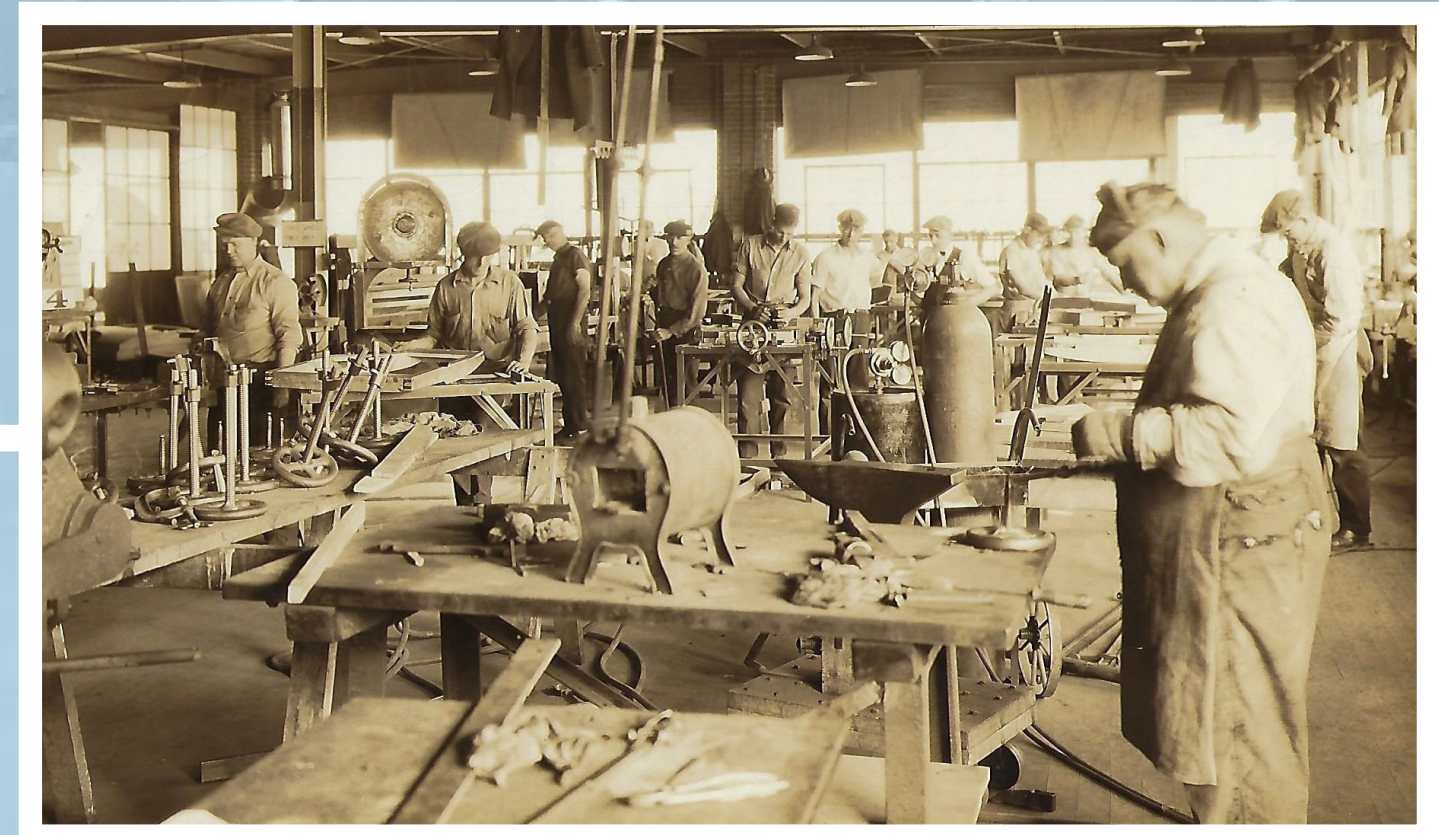


The factory produced bodies for the Graham Paige Assembly plant in Detroit.



Three-Passenger Coupe with Rumble Seat

There were over 30 models of Graham Paige cars offered.



The stock market crash and depression of the early 30s really hurt Graham Paige, and sales plummeted. Eventually they dropped Paige from their name and just became Graham.



The Wayne factory was closed in 1936, and Graham struggled to stay relevant. They invented a new kind of tractor that was sold through Sears catalogues, and even got into the toy business, selling metal die-cast cars, trucks and tractors.



Graham was bought in 1947 by Kaiser-Frasier, who at the time was the 3rd leading auto producer in the nation. Cars were produced at Willow Run in Ypsilanti, but this company too began to fade and production ceased in 1955. They merged with what would become Jeep, who were then taken over by AMC and finally by Chrysler.