

Detroit United Railways

D.U.R.



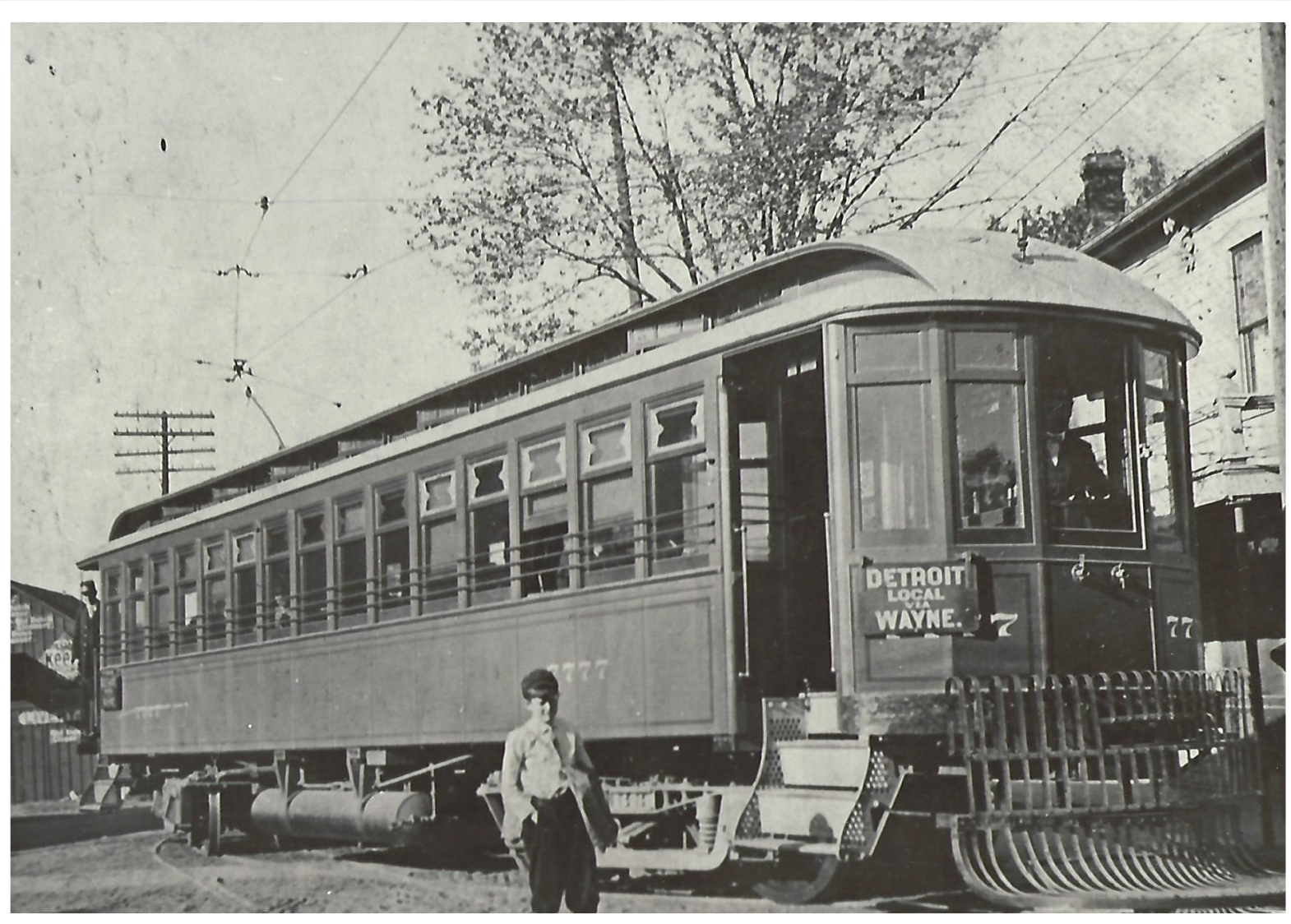
The D.U.R. was a system of electric streetcars that ran from Detroit out to surrounding towns. It reached Dearborn in 1896, and Wayne in 1898. From there it ran to Ypsilanti and Ann Arbor, as well as up to Plymouth and Northville.



A station building was built on the SE corner of Michigan Avenue and Wayne Road. It housed a waiting room, ticket office and freight room. In 1911 the building was expanded and housed new electrical generators for the line.



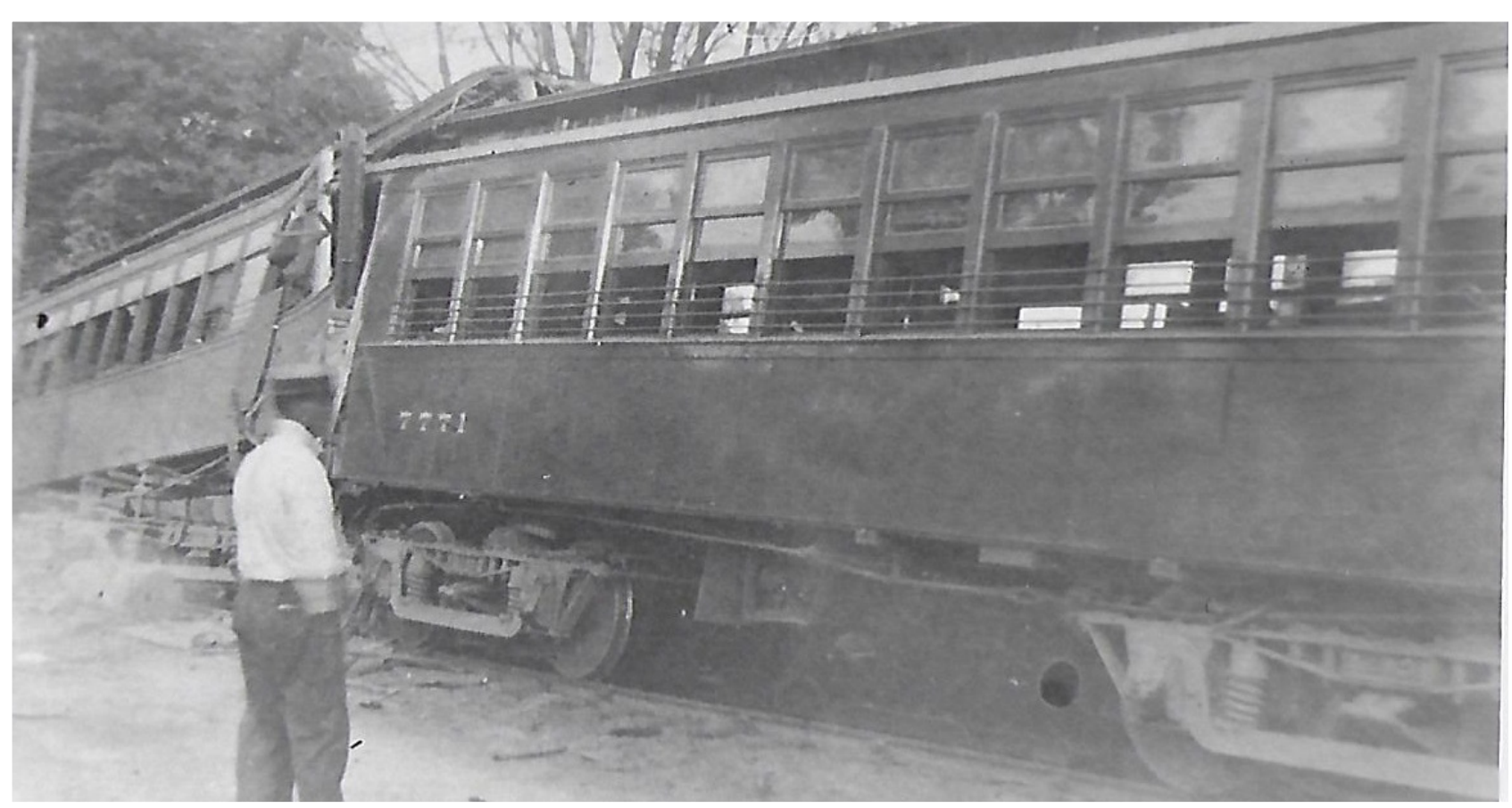
The fare to Detroit was 15 cents, and 5 cents to Eloise. You could also pay by the mile, depending on how far you went.



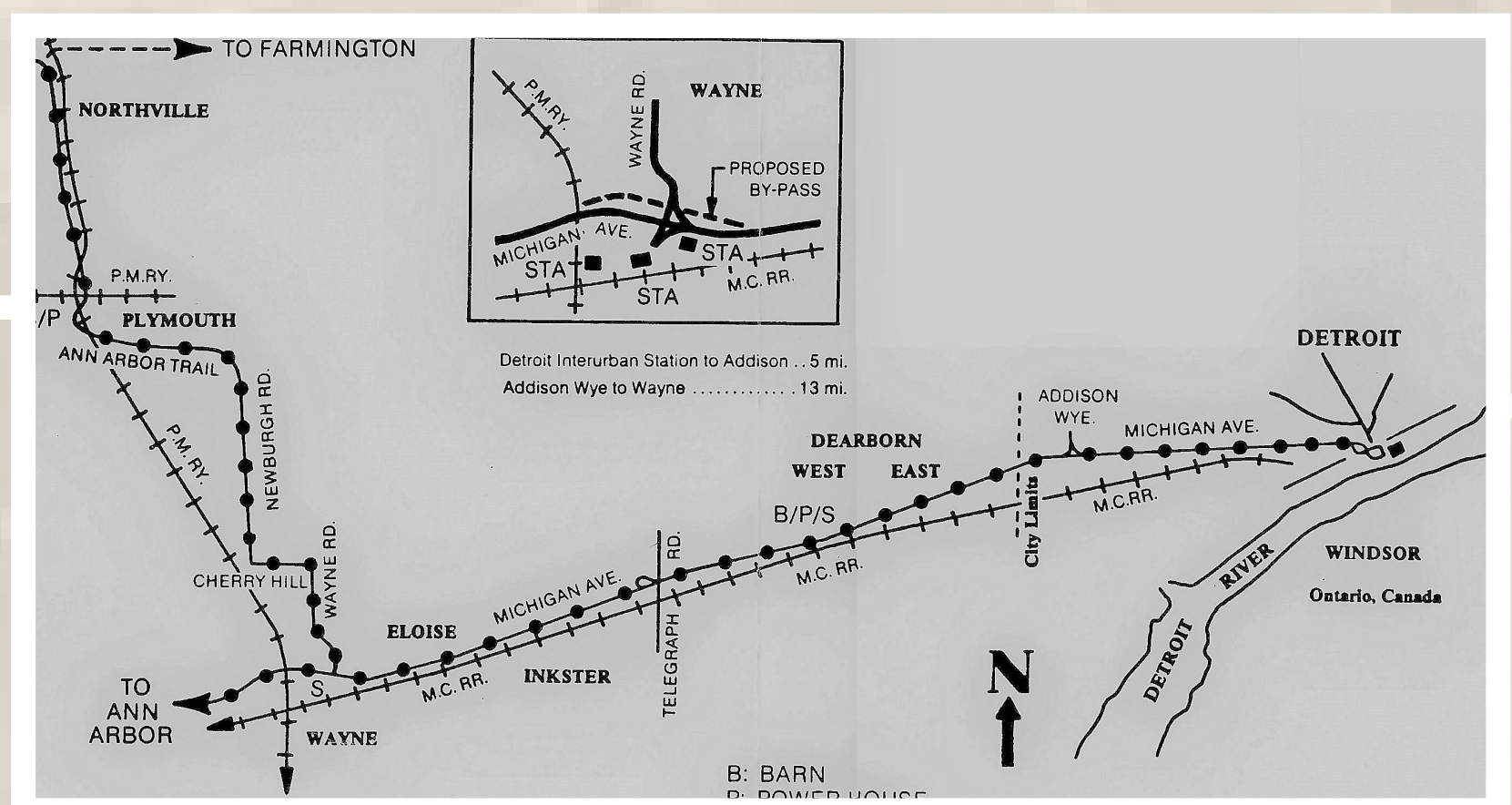
The 77-77 was the favorite car of Wayne residents.



In the country, speed was important to make up for lost time. The cars regularly went 50 mph, and some of the later cars could hit 90 mph. During the war, Harroun motors shipped artillery shells on the D.U.R. line to Detroit.



Due to speed and collisions, accidents did happen. A particularly bad accident happened near Chelsea, where 14 were killed and 49 injured. In Wayne, cars were known to take out farmers stray cows or other animals that had wandered onto the tracks.



The line and its branches extended for over 500 miles across southern Michigan, connecting many small towns. By the late 20s competition from automobiles, busses and trucks began to take a toll on the streetcar system nationwide. In 1929 the line to Wayne was discontinued, and the vacant station building was torn down in 1938.

